

Resco Explorer 2007

Table of Content

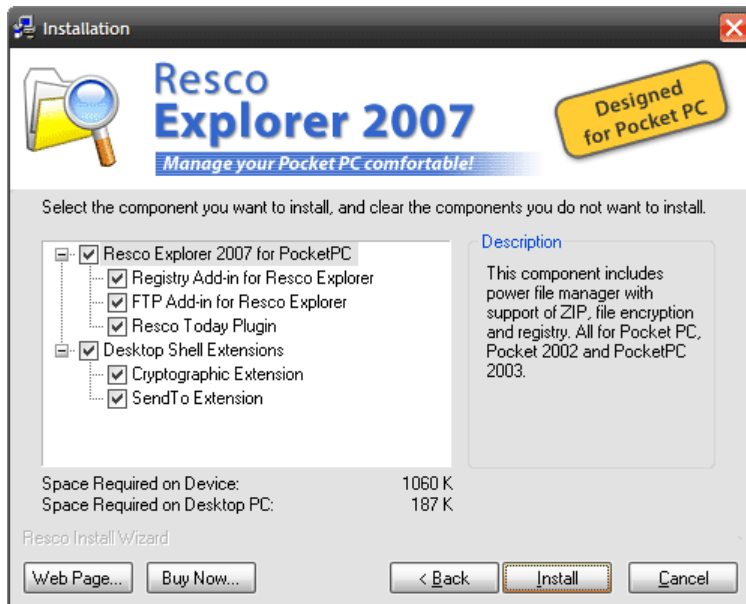
Getting started	2
Installation	2
Requirements	2
Desktop (EXE) installation steps	2
CAB installation steps	3
Uninstallation	3
Registration	3
When registration fails	4
Files	5
Open Files	5
File Operations	5
Searching files.....	6
3.4 File Compression	6
3.5 File Encryption	7
Favorites	8
Network.....	9
FTP.....	10
Recycle Bin	11
Registry Editor	12
Today Plugin	13
Settings.....	14
General	14
Add-Ins options	15

Getting started

Resco Explorer 2007 offers: ZIP compression, built-in viewer, registry editor, file association, network browser, FTP-add in, quick search, sending files via Bluetooth or IRDA, strong file encryption, Today Plugin, Recycle Bin, file types highlighting, status bar, and customizable startup folder.

Users will also appreciate improvements in the field of networking, the ability to view encrypted files with the built-in viewer, running application manager in the Today Plugin and dozens more.

Installation



Requirements

- Pocket PC 2000/2002, Windows Mobile 2003 (SE) based Pocket PC, Windows Mobile 5.0 and Windows Mobile 6.0 Classic and Professional
- Microsoft ActiveSync 3.6 or later (for desktop installation only)
- 1.5 MB free memory in device

Desktop (EXE) installation steps

1. Download appropriate installation file ([rescoexplorer_p.exe](#))
2. Insert your device into the cradle and check if ActiveSync is connected
3. Run executable file you just downloaded to start installation.
4. Select components you want to install
 - a. **Resco Explorer 2007 for Pocket PC** — main application
 - b. **Registry Add-in** — registry editor
 - c. **FTP Add-in** — FTP client for your device

- d. **Resco Today Plugin** —shows the battery/memory status and your favorite applications on the today screen
- e. **Desktop Shell Extensions** — Desktop application that enables context menu encryption or decryption of files on your desktop and an easy [**Send To**] command (send files from desktop PC to your device)

CAB installation steps

1. Download appropriate installation CAB file (Each component must be installed separately):
 - a. [rescoexplorer_p.ARM.CAB](#) (main application)
 - b. [registrymui_p.arm.cab](#) (Registry Add-in)
 - c. [ftpaddinmui_p.arm.cab](#) (FTP Add-in)
 - d. [retodaymui_p.arm.cab](#) (Today Plugin)
2. Insert your device into the cradle and check if ActiveSync is connected
3. Copy the cab file into your device (using ActiveSync Explorer)
4. Run the cab file on your device.

Uninstallation

Use the common uninstallation procedure.

Go to “**Start > Settings > System tab > Remove programs**”, then select Resco Explorer (Plugins must be uninstalled in the same manner) and tap on [**Remove**]

Registration

Resco Explorer 2007 comes with a free 14-day trial. The trial version offers full functionality, except it stops working after 14 days. After the expiration you have to either purchase the unlock key or install a trial of a higher version.

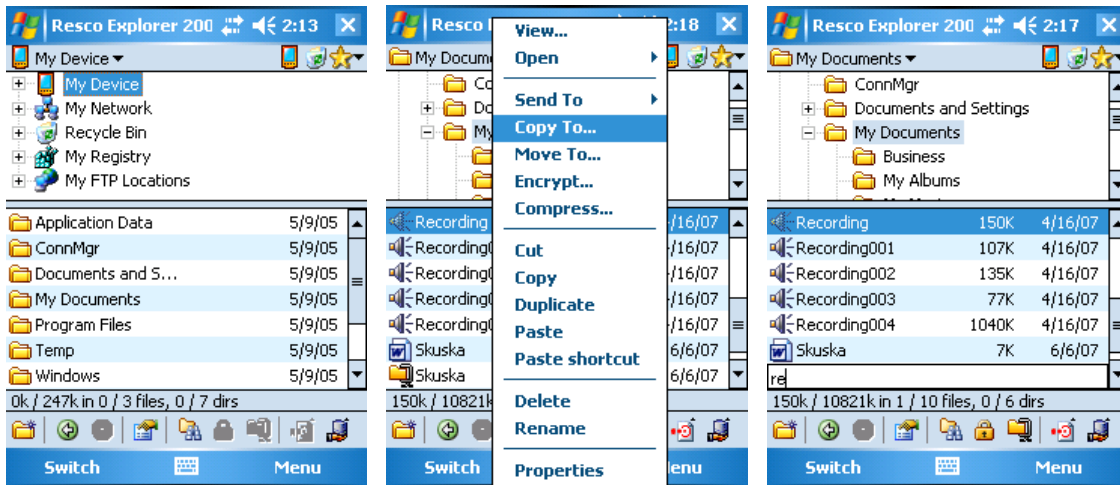
Once you have purchased the full product, you will receive the unlock code that will allow unlimited use of the purchased version of the product. You will also be entitled to free upgrades within one year from the date of the purchase. The prolongation for the next year costs 50% of the product's actual price.

5. Tap “**Menu > Options > Registration...**” (old type devices File > Registration)
6. This takes you to the registration screen
7. [**Owner**] field is already filled with name of device's owner. Please note that this must be exactly same as owner name you received from our registration center.
8. Into [**Code**] field enter your registration code as you did receive from our registration center.
9. Tap enter or [**OK**] button.

When registration fails

- Make sure owner name matches exactly name you sent to our registration center. Owner name is case sensitive.
- Use default keyboard when typing
- Do not use any spaces inside your name
- Contact our support centre at support@resco.net

Files



Open Files

Tap a file to open it using the associated application

By tapping and holding stylus on the file you bring up a popup menu.

- Tapping **Open** > **Open** opens the file using associated application
- Tapping **Open** > **Open with** opens menu of all applications where you can choose the one to open the file with.
- Tapping **View...** opens the file using the built-in viewer.

The built-in Viewer can be used to view files in TXT, BIN or HEX format, as well as JPEG, GIF, BMP and PNG graphic formats

By checking Always use this program to open this file type you associate this file type with this application.

File Operations

Copying, Moving files and Creation of shortcuts

1. select the source files or folders (you can use **Multi-selection Mode** in the “**Menu** > **Edit**”)
2. display the popup menu by tapping and holding the stylus on these files.
3. select **Copy** or **Cut**
4. select the destination folder
5. display the popup menu in this folder and choose **Paste** or **Paste Shortcut**

Deleting a file or folder

1. Display the popup menu on this file/folder and choose **Delete**.
2. Renaming a file or folder
3. Select the desired file/folder, display the popup menu and tap **Rename**.

4. Type the new name and press **[Enter]** on the keyboard.

Creating a new folder

- Locate the folder in which you wish to create a new folder.
- Tap **Menu** › **New Folder**.
- Type the desired name and tap **[enter]**.

Searching files

Quick search

Start by typing in the name of the file on your keyboard, a small dialog box should appear below the active file window allowing quick search for file names. The cursor jumps to the next file name starting with the letters you typed. By pressing the cursor upwards or downwards, you can jump to the next or previous match. The box is automatically closed when you start another action.

Search for desired file

- select **Menu** › **Find ...** from the menu
- enter the file name (you can use wildcards *;?) and the folder where to search
- press **[Find]**

Find text in files

- select **Menu** › **Find ...** from the menu
- enter the file name (you can use wildcards *;?)
- select **Menu** › **Find text**
- enter the text you are searching for
- press **[Find text]**

File Compression

File compression can be used to increase the storage space of any storage device. Resco Explorer 2007 uses ZIP algorithm that is PC compatible, so you can extract archives created on a desktop PC and vice-versa.

Compression of files

- select the files you want to compress
- display the popup menu by tapping and holding the stylus on the selected files and choose **Compress ...**
- enter the archive name
- select **Menu** › **Set Password...** button if you need to protect your archive
- tap **[OK]** or **[Add]** button

Extraction of files

- select the archive (zip file) you want to extract

- display the popup menu by tapping and holding the stylus on the selected
- files and choose **ZIP Archive › Extract To ...**
- specify the destination folder
- specify the overwrite mode
- tap [**Extract**]

Adding or moving files to an existing archive

- select the files you want to add
- display the popup menu by tapping and holding the stylus on these files
- and tap **Copy** or **Cut**
- select the destination archive or its subfolder
- display the popup menu on this folder and choose **Paste**.

File Encryption

Normally, the following algorithms are installed on your Pocket PC: Base

Cryptographic Provider with RC2 (40bit) or DES (56bit). Power users can install an Enhanced Cryptographic Provider (see www.resco.net) with stronger algorithms such as RC2-128bits, DES-56bits, 3DES TWO KEY–112bits, 3DES–168bits.

Encryption of files

1. select the files you want encrypt
2. display the popup menu by tapping and holding the stylus on the selected files and choose **Encrypt...**
3. press [**Settings ...**] if you wish to set the cryptographic provider or encryption algorithm
4. type and confirm the password and tap [**Done**]

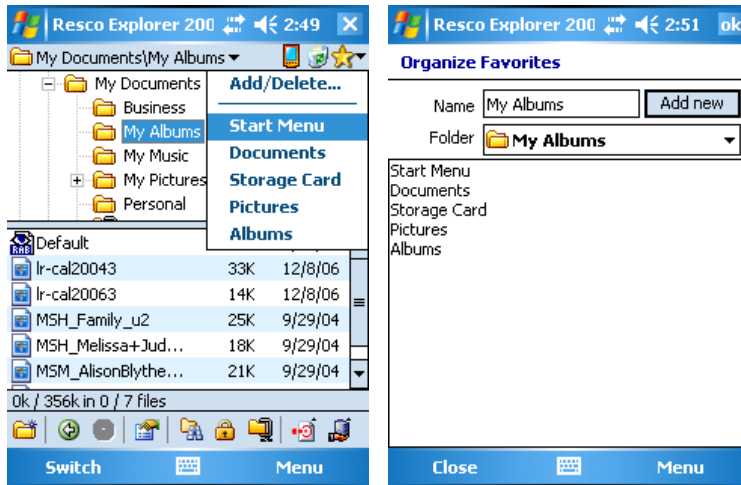
Decryption of files

1. select encrypted files you want to decrypt
2. display the popup menu by tapping and holding the stylus and choose **Decrypt...**
3. type the password and press [**Done**]

About desktop PC support

You can install a Windows 95/98/NT/2000/XP shell extension during the installation. It allows you to encrypt/decrypt files by using Microsoft File Explorer directly on your desktop PCs.

Favorites

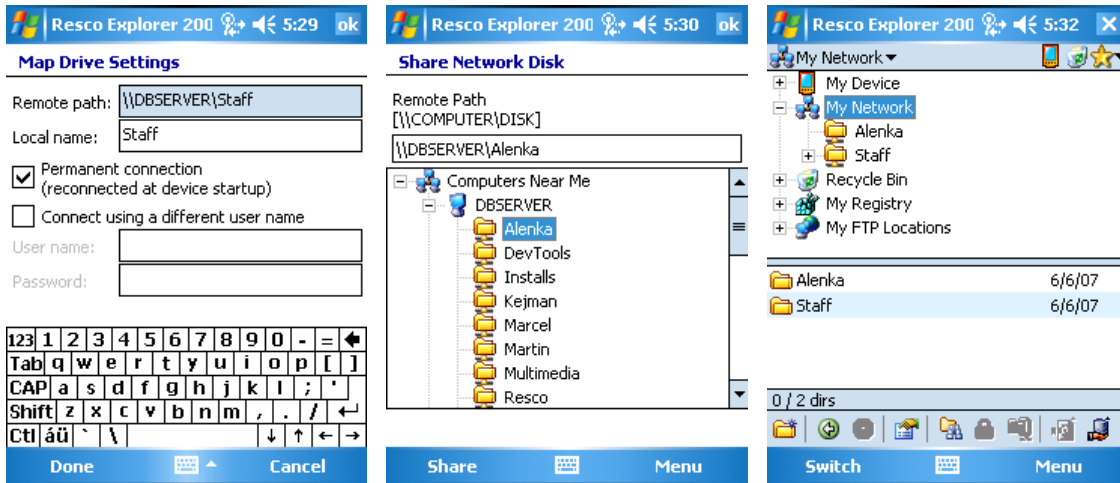


Favorites are folders which you can easily open by tapping the [**Favorites**] icon at the top right side of the screen.

Adding/Deleting favorites

1. tap the Favorites icon
2. select **Add/Delete...** menu item
3. select a folder in the dialog that opens
4. name the selected folder for better orientation
5. press [**Add new**]
6. you can change the folder name order using [**Move Up**] and [**Move Down**] buttons
7. you can delete any selected folder using the [**Delete**] button

Network



In order to access the network you must have a network card. You can't access the network using Active Sync only.

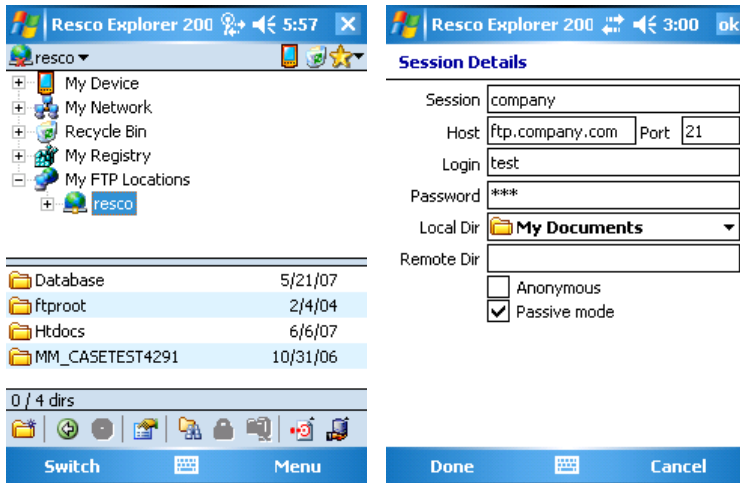
Map a network drive

1. press the Network toolbar button and select **Map Drive ...**
2. or press **Menu > File > Network > Map Drive**
3. wait while the system searches for network computers
4. select the desired computer and display the list of its disks (press [+])
5. select the disk you wish to map
6. press the **[Share]** button

Unmap a network drive

1. press the Network toolbar button and select **Unmap Drive...**
2. select the connection you wish to disconnect
3. press the **[Disconnect]** button

FTP



FTP Explorer gives the possibility to browse the FTP server's content directly in your Resco Explorer 2007 window by adding the root below the “**My Device**”.

Creation of a new FTP session

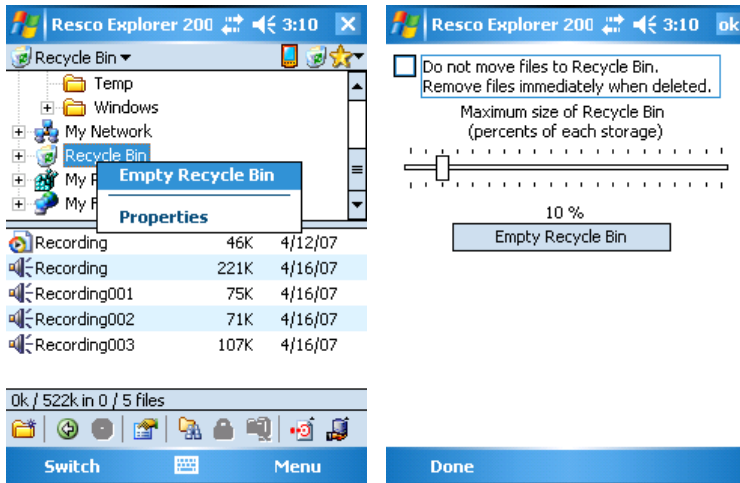
1. press **My FTP Locations** at the beginning of root (If your tree does not display registry root, open Option dialog and check “**My FTP locations**” in **Menu > Options > Add-Ins**)
2. press **New FTP Session...**
3. specify session details and press **OK**

tap and hold stylus on desired session and in pop-up menu press **connect**

Deleting FTP session

- tap and hold stylus on desired session and in pop-up menu press delete

Recycle Bin



Resco Explorer now moves deleted files into a virtual folder “Recycle Bin” instead of immediate deletion.

Restoring files from Recycle Bin

- press **Recycle Bin** at the beginning of root
- tap and hold stylus on desired file(s) and in pop-up menu press **Restore**

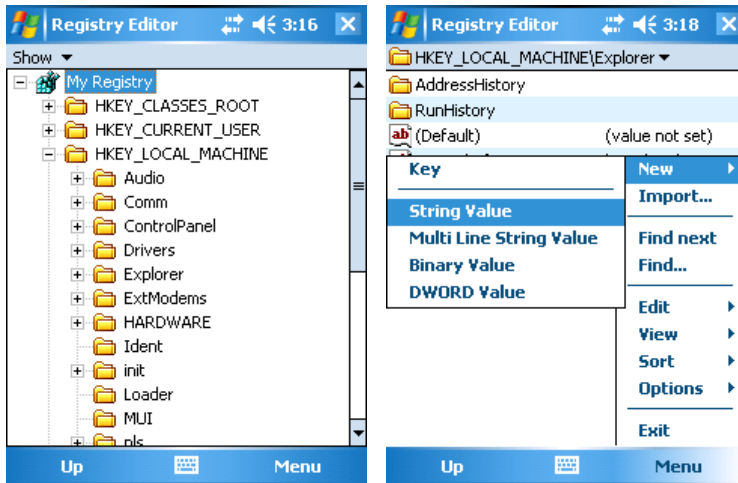
Emptying Recycle Bin (3 options)

1. If you have selected Recycle Bin icon in the Tree View tap **Menu** > **Empty Recycle Bin**
2. or tap and hold stylus on Recycle Bin icon and in pop-up menu press [**Empty Recycle Bin**] button
3. In **Menu** > **Option** > **Add-Ins...** choose [**Recycle Bin**] tab and press [**Empty Recycle Bin**] button

Disabling/Enabling Recycle Bin

- In **Menu** > **Options** > **Add-Ins...** choose [Recycle Bin] tab check/uncheck **Do not move files to Recycle Bin**

Registry Editor

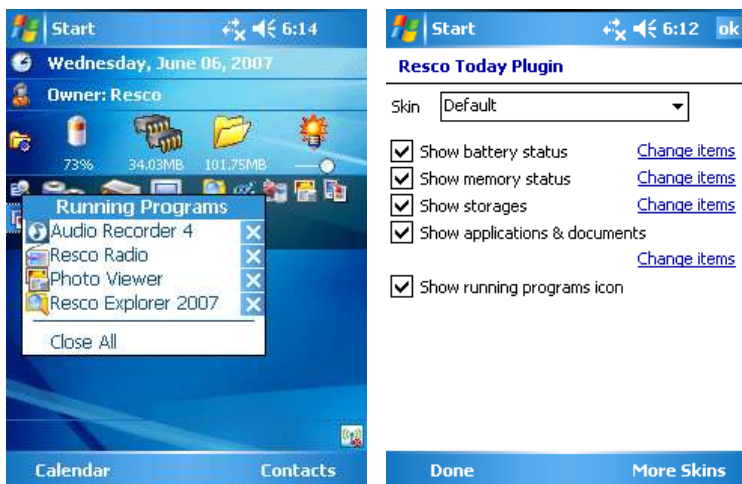


The Registry Editor is for power users only. Deleting or changing some critical keys can cause your device to crash. Use it carefully.

The Registry editor allows you to export, import, view or modify the registry keys.

If your tree do not display registry root, open Option dialog and check “**My Registry**” in “**Menu** > **Options** > **Add-Ins**”

Today Plugin



Functionality:

- Check your battery status and the free storage/memory directly on the Today screen.
- Launch your favorite applications and documents with a single tap.
- Browse the storage card with a single tap.
- Manage running applications with Built-In **Task Manager**
- Get the detailed storage properties.
- Use arrows for smart movement

Settings

You can access options of the Today Plugin by tapping the small icon in the left corner of the Plugin. Here you can change skins, items in the Today Plugin, or download new skins.

Settings

General

There are a lot of options you can modify to increase the comfort of usage. To access option menu tap “**Menu > Options > General...**”

General Options

Check [**Last opened folder**] if you want to start the application with the last opened folder or specify a concrete folder

Check [Open Folder Shortcut with Resco Explorer] if you want to create folder shortcuts that will automatically open this application instead of the built-in MS File Explorer.

Check [Double tap Activation] if you prefer to double-tap a List View item to activate it (open folder, run an application ...) rather than using a single tap.

View Options

Check [**Use vertical windows splitter**] if you want to change horizontal splitter

Check [**Support WM 5.0 soft-keys**] if you have windows mobile 5.0 or 6.0 device

In [**Font setting**] you can change size of the font to small, normal, large or extra large.

By checking [**Bold**] you can set the font to bold mode.

You can use clear-type fonts by checking [**Use Clear Type**]. Not all systems support this feature.

Browser Options

With the first option checked you can hide files with the following extensions: .DLL, .CPL, .DRV, .HTP

Check the [**Hide hidden files**] option if you do not need to access system or hidden files.

Check [**Hide files in ROM**] if you do not need to view files in ROM

Check [**Hide folder**] to hide all folders on your device.

Check [**Hide file extensions**] if you do not want to view the extension of files

Please note that hiding files accelerates your work with Explorer, especially if you need to access folders with large amounts of files.

Colors

You can setup striped list color

File Settings

In this option you can specify whether the application shall prompt you to confirm actions such as delete or overwrite before actually performing them.

You can also choose if the send to operation will copy or move file(s)

Viewer Settings

Check [**Use internal file viewer**] if you want to view files using the built-in viewer.

Check [**Use external file viewer**] option if you wish to use different viewer. To do it you must specify the respective path.

Check use tap to [**view selected file**] if you wish to view files simply by tapping them with a stylus

Check use tap to [**open selected files**] if you wish to open files simply by tapping them with a stylus. Files will be open in an associated application. Association can be created using the “**Open**” or “**OpenDoc**” method.

Keyboard Shortcuts

You can map hardware buttons behavior.

Add-Ins options

To access option menu tap “**Menu › Options › Add-Ins...**”

Setup for following Add-ins: ZIP, Recycle Bin, Network, Registry, FTP and File Associations